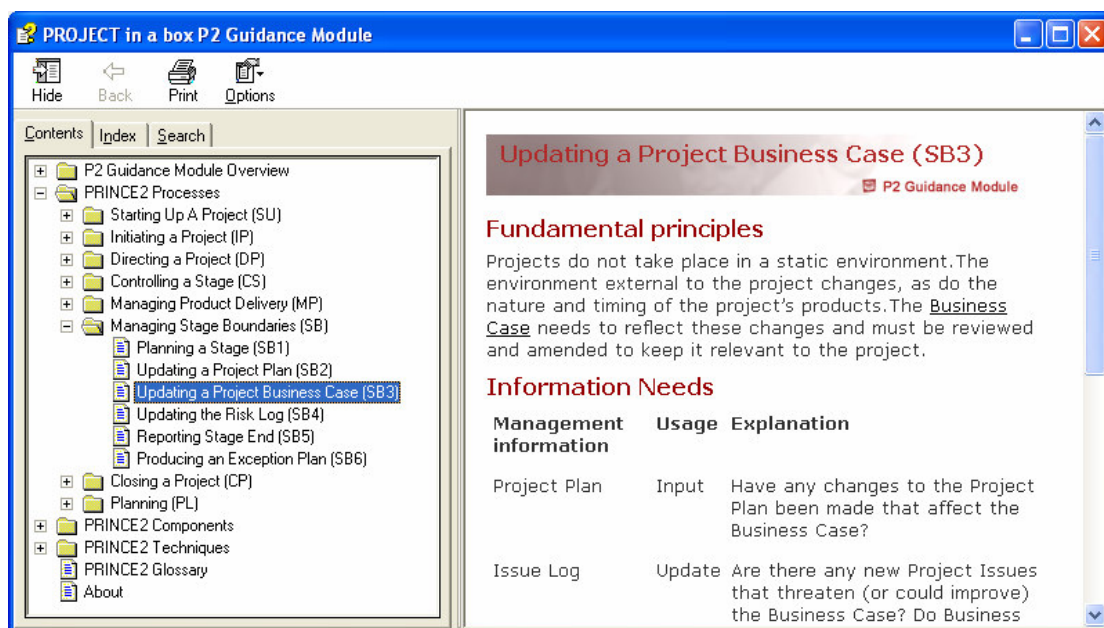


Still using your PRINCE2™ manual?

Most Practitioners find they still have to regularly refer to the manual for guidance while delivering projects....

Unfortunately it is hardly portable and not easy to navigate around, finally though a solution is at hand with the P2 Guidance Module. P2GM provides the most commonly used parts of the manual packaged in an MS help file available context sensitively from your software and fully cross linked.....

.....now you can retire your manual to the shelf !

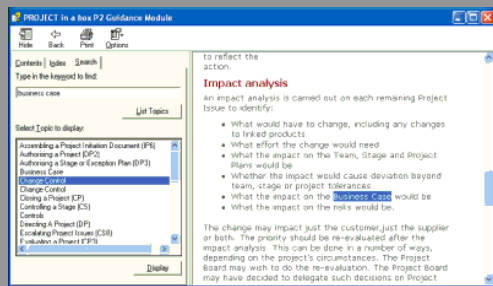


Let's face it.... It can feel a little odd using the manual to refresh your self with particular parts of the PRINCE2™ method when you return to the office after your course, often it can look worse still months or years later when your colleagues see you as an expert. This is nothing unusual, PRINCE2™ is a complex method and no one can be expected to remember 450+ pages of material. That's why P2GM provides the most commonly used content in the manual as a context sensitive resource available from your PROJECT in a box client or as part of Personal Version to provide the guidance you need, when you need it with no fuss or conspicuous thumbing of the manual.

In fact while you are working in PROJECT in a box all you need to do is press the F2 key and the module will launch at the most relevant section to your current work, usually the current process or sub process. From there you can read, search or use the links to research the processes, components and techniques. All 25,000+ words are Authentic and exactly as published in the current PRINCE2™ manual, reproduced under license from OGC.

Using the P2 Guidance Module

Provision via a Microsoft Help file makes the guidance very easy to navigate due to the familiar layout of the system and the powerful tools provided as standard.



In addition to the 250+ cross links provided with hyperlinking and the fully populated contents and index sections, full keyword searching has also been activated for P2GM enabling you to quickly find guidance on terms even if you are unsure where to start in the contents.

You can scale the pages to fit your reading requirements or alternatively you can choose to print topics out if required.

Production of P2GM

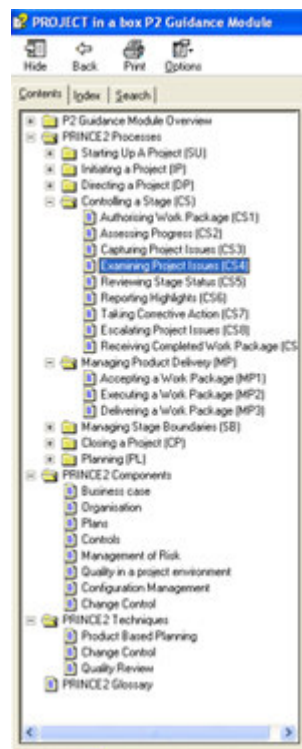
As with most good ideas this originated with you our customers. Many of our 15,000+ Community Edition users approached us to say they loved our approach of only using Authentic material in our products and the fact that we went to the effort of licensing this to give them a better system and a more authentic PRINCE2™ experience.

We were commonly being asked though why we didn't provide guidance to back up the other quality authentic materials we provided. We firstly considered writing our own guidance with loose reference to the manual as all the other software vendors have done (to avoid paying royalties for reuse of authentic material).

We realised quickly though that this would be selling our users short and just likely to cause confusion, something less than ideal in a guidance module. So we bit the bullet and arranged a licence to provide these 25,000+ words which is just about a quarter of the entire manual. Unfortunately this is not a cheap licence to obtain and we have therefore had to restrict this module to a commercial offering as noted above.

Overview of P2 Guidance Module

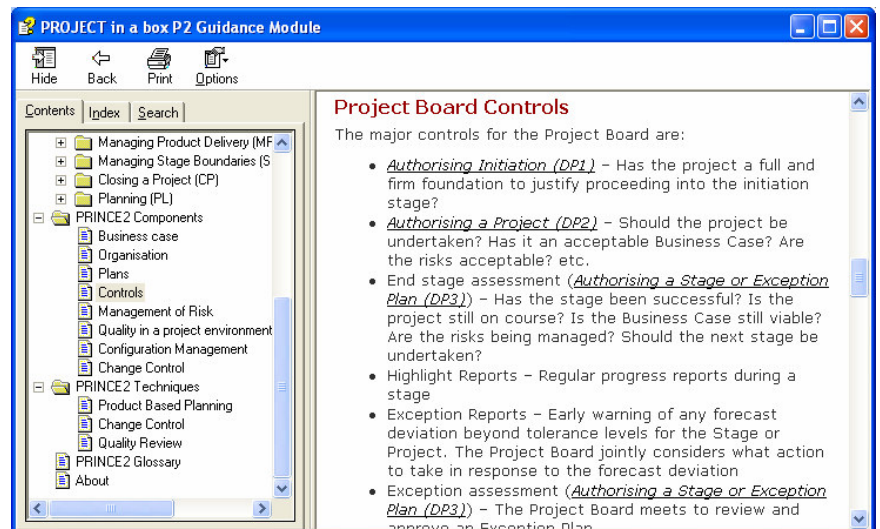
P2GM provides over 25,000 words of authentic material from the PRINCE2 manual. To produce P2GM we went through the manual and identified which bits are most often looked up, we discussed this with a good number of our users and licensed these, roughly as follows for every:



- ❑ **Process** - Fundamental Principles*, Context*, Process Description* and Scalability, & our own links section
- ❑ **Sub-Process** – Fundamental Principles*, Information needs & our own links section
- ❑ **Components** – All eight components covered, some in full some abridged
- ❑ **Techniques** – All three covered in abridges form
- ❑ **Glossary** – Provided in complete form

This information has been divided into 70 easily digested topics and contains over 250 cross references for easy navigation between related topics.

* abridged in some cases



P2GM can be purchased as a standalone reference source but it is most useful when used in conjunction with PROJECT in a box software:

- ❑ £25 per user with PROJECT in a box clients
- ❑ Inc. as standard in the £100 Personal Version

Further Information and Prices are available from:

www.projectinabox.org.uk
enquiries@projectinabox.org.uk
 or by calling +44 (0)1993 810425